

PUBLIC FACILITIES



- 8.1 INTRODUCTION
- 8.2 CULINARY WATER
- 8.3 SEWAGE
- 8.4 CITY BUILDINGS & PROPERTIES
- 8.5 ELECTRICAL & GAS SERVICE
- 8.6 PARKS & RECREATION
- 8.7 RELIGIOUS SITES
- 8.8 GOALS
- 8.9 MAPS

PUBLIC FACILITIES

8.1 Introduction

Public facilities represent the public's investment in the development of the complex urban infrastructure necessary to support the physical operation of Eureka City. The Public Facilities Chapter is a plan for municipal utilities and public structures, properties, and measures required to meet the needs of the community. It should be reviewed periodically and updated within the context of all other General Plan chapters and against the broader context of changing economic, social, and political standards of the City.

Eureka City's public facilities are designed to respond to the identified needs of both the existing population and the forecasted population. The Public Facilities Chapter of the General Plan presents a longer term, more comprehensive view that addresses existing infrastructure needs of the City as well as projected needs over the next 30-50 years. The location, size, timing, and financing of major streets, water, sewer, drainage, electric systems, parks and playgrounds, police and fire stations, and libraries must be planned well in advance of their construction.

Planning for these facilities will be a means of minimizing cost, optimizing usefulness, and maximizing benefits. Projected locations of facilities shown in this Public Facilities Chapter are generalized rather than site specific. Future development plans will determine the final timing and location of facilities.

8.1.1 Recent Projects

It should be noted that in 2013 a water and wastewater improvements project was conducted for the City of Eureka by Sunrise Engineering and Johansen Construction Inc. This project was financed by the United States Department of Agriculture (USDA) Rural Development. Due to the recent improvements, many sections of this chapter will reference the project completed in 2013. Maps and other information have also been taken and summarized from an Environmental Assessment report conducted by the Army Corp of Engineers. More specific information can be found in that report and by contacting Sunrise Engineers directly. The 2013 Water Supply and Wastewater Treatment Improvement Project included the construction of a new well and well house, water storage tank, booster station, water distribution and wastewater collection pipelines, maintenance building, and upgraded infrastructure for both systems.

8.1.2 Community Input

Based on information gathered from both surveys and citizen involvement meetings, many citizens believe that transportation related topics are important to the overall improvement of Eureka. Some of the key improvement items that were brought forth from the survey include but are not limited to water distribution, sewer services, and wastewater disposal. The citizens of Eureka were able to inform the development team of additional improvements in addition to the questions of the survey that were desired by the community. Additional

8.2 Culinary Water

8.2.1 Sources of Water

According to an Army Corp of Engineers report, Eureka City has six sources of culinary water that come from wells outside of the city. Culinary water lines can be seen in Map 8.1 on page 70. Map 8.1 was created by JBR in preparation for the 2013 water and wastewater project. The map shows all of the currently existing water system lines as they existed in 2013.

8.2.2 Existing Systems

Eureka's existing culinary water and wastewater systems are two separate networks of underground pipelines and associated facilities that provide water and sewer service to residential and commercial users. The City employs a water and sewer operator who is licensed to operate both systems. Inspection and maintenance access is via US-6, paved roadways in the city, and dirt and/or gravel roads along fields and open areas. All six of the water supply wells, and a booster station, are located on County land outside the city. The five wells east of the city provide approximately 25 percent of the City's water supply, and the Tintic Junction well to the west supplies 75 percent. The booster station is required to transport the well water to Eureka.

Within the City of Eureka there are two water storage tanks that supply the city with culinary water. The water storage tank located on the north side of the city has a capacity of 500,000 gallons while the new water tower installed on the south side of the city has a capacity of 300,000 gallons.

8.2.3 Minimum Water Pressure State Rules

In 2007, the State updated its rules regarding the minimum water pressure requirements for fire hydrants. Prior to 2007, the State required that water systems with fire hydrants ensure



improvements that were brought to the attention of the planning team include public law enforcement, the installation of a natural gas line, and flood control measures.

The goals and strategies in this section were a direct result of input from the local citizens of Eureka as well as City officials. Such involvement was crucial in order to fully understand the current conditions of recreation facilities and opportunities. During two public meetings, maps of the city were laid out and citizens were given the opportunity to highlight areas and topics of concern and to also point out improvements that could be made. These comments helped to direct the planning staff in determining what key opportunities should be focused on in this section.

a minimum water pressure of 20 pounds per square inch (PSI) when fire flows are added to peak day demands (flows) in the distribution system. The rules were revised to ensure public safety and now require that new systems have minimum pressures of 20 PSI during conditions of fire flow and fire demand experienced during peak day demand, 30 PSI during peak instantaneous demand, and 40 PSI under peak day demand. These concerns were addressed as part of the 2013 improvement project. Map 8.2 on page 71 shows the water system components that were installed as part of the 2013 improvement project. Included in the map are: new waterlines, the new 300,000 gallon tank, new booster station, existing booster station, one of the existing wells, the new well, as well as the location of the existing treatment facility and lagoons.

8.3 Sewage

The City of Eureka is responsible for the sanitation of its own wastewater facilities. The wastewater systems for the City of Eureka are treated at a treatment facility with lagoons that is located approximately two miles southwest of the city. In 2013, the wastewater system was updated as part of the improvement project. The system prior to the improvement project can be seen in Map 8.3 on page 72. The improve-

ments that were made during the water and wastewater improvement project including all replacements and extensions of the system can be seen in Map 8.4 on page 66.

8.4 City Buildings and Property

Map 8.4 on page 73 contains all of the public facilities within the City of Eureka. The map contains the locations of City Hall, City Offices, the City Park, Eureka Elementary School, Eureka Fire Station, the Porter Rockwell Cabin, Tintic High School, Tintic Mining Museum, Tintic School District Offices, and the United States Postal Service building.

8.5 Electrical and Gas Service

The City of Eureka receives its electrical power through Rocky Mountain Power. Rocky Mountain Power has the most up to date electrical maps. At this time the City of Eureka does not generate its own power.



EUREKA GENERAL PLAN

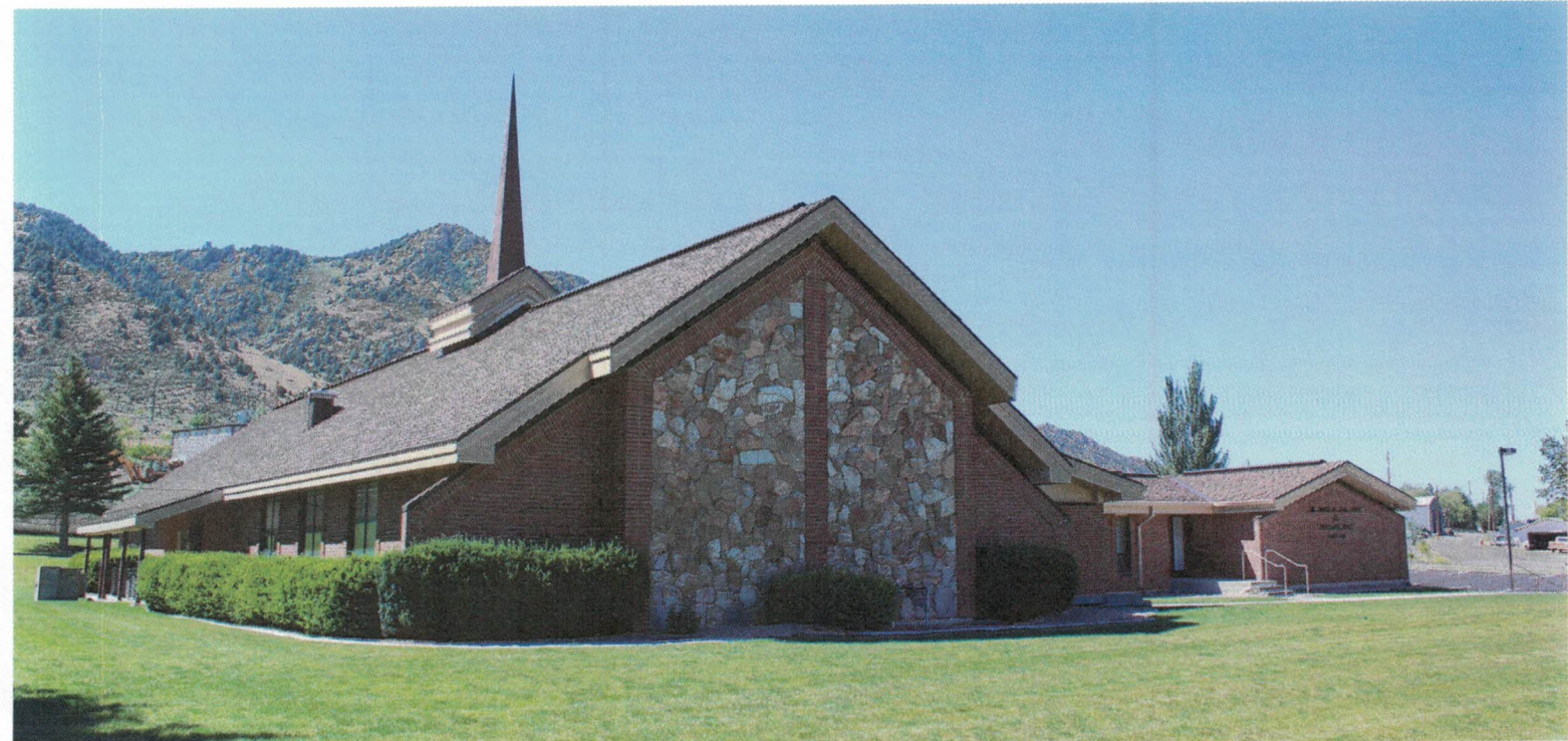
Many homes throughout the city utilize propane for their gas utilities. While gas mains do not exist throughout the city, there are several different gas providers that bring propane gas to the residents of Eureka. Some of these companies include, but are not necessarily limited to, Freeway Propane, Blue Flame Propane, Suburban Propane, and AmeriGas. The feasibility of providing natural gas from a privately provided source should be considered for the benefit of the citizens of Eureka. Should the benefits outweigh the costs to provide this natural gas line to the city, the installation of such a pipeline should be promoted.

8.6 Parks and Recreation

The City has several parks and playgrounds. The parks include fields, playground equipment, and restroom facilities. In Appendix A, further guidelines and recommendations can be found for beautification programs to enhance the aesthetic of parks, recreation areas, and trails. Map 8.5 on page 74 shows the parks at Eureka Elementary School, Tintic High School, and the City Park.

8.7 Religious Sites

Eureka is serviced by several churches and meetinghouses. The Church of Jesus Christ of Latter Day Saints (LDS) operates one meetinghouse in Eureka which is located on Main Street in front of Eureka Elementary School. The Old Mormon Meetinghouse Historic Site and Methodist Meetinghouse are in the center of town on Main Street. The St. Patrick Catholic Church is on the west side of town on Church Street. Religious sites are shown in Map 8.6 on page 75.



Goals & Strategies:

Provide facilities which increase the quality of life of Eureka's residents

Provide effective police and fire protection as well as emergency medical service facilities within the City

Mayor, City Council, City Administrator, Fire Department, and Ambulance Association

Upgrade City parks to have more amenities such as more benches and pavilion areas

Mayor, City Council, and City Administrator

Maintain all existing public facilities and prevent them from deteriorating

Mayor, City Council, and City Staff

Consider installing and monitoring security cameras surrounding City park and recreational facilities

Mayor, City Council, and City Staff

Upgrade and maintain the current utility systems of Eureka

Ensure there is a proper public water supply and distribution system to serve the needs of the City both present and future

Mayor, City Council, and City Staff

Ensure an adequate sanitary sewer system to serve the needs of the City

Mayor, City Council, and City Staff

Research and pursue federal grant programs to be used for flood control and channelization

Mayor, City Council, and City Staff

Ensure private development is responsible for additional utility lines that lead to and from the new development

Planning Commission, Mayor, City Council, and City Staff

Ensure public facilities are adequate for future populations and that expansion is planned for and carried out to accommodate those needs

Mayor, City Council, and City Staff

Ensure all utility systems are regularly maintained. This maintenance includes, but is not limited to, the regular cleaning, inspection, and testing of water facilities

Mayor, City Council, and City Staff

Ensure all local parks and public facilities are cleaned and maintained in order to promote aesthetics and security to the community

Mayor, City Council, and City Staff

Consider the feasibility of providing natural gas from a privately provided source

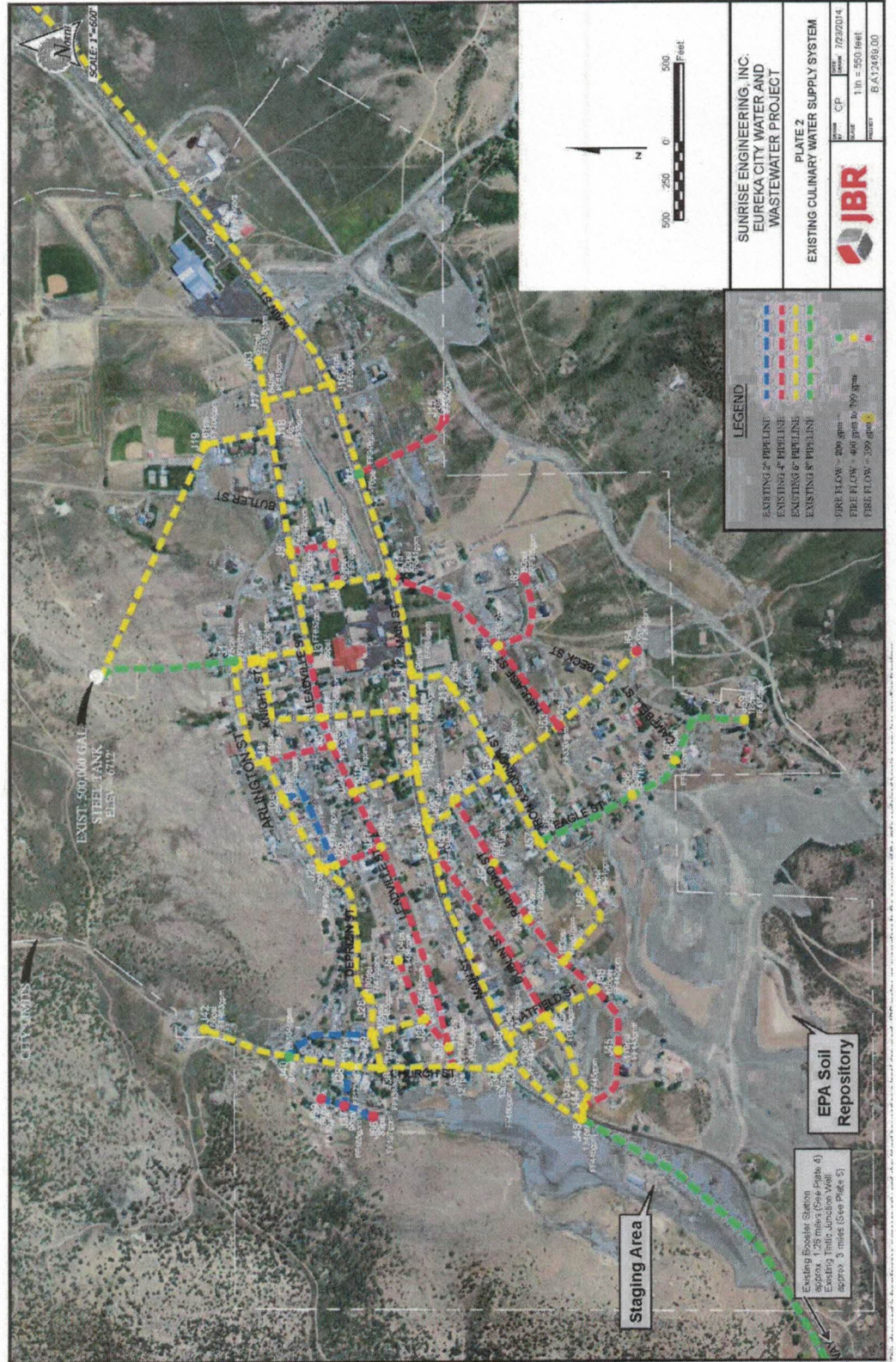
Contact natural gas providers in the region

Mayor, City Council, and City Staff

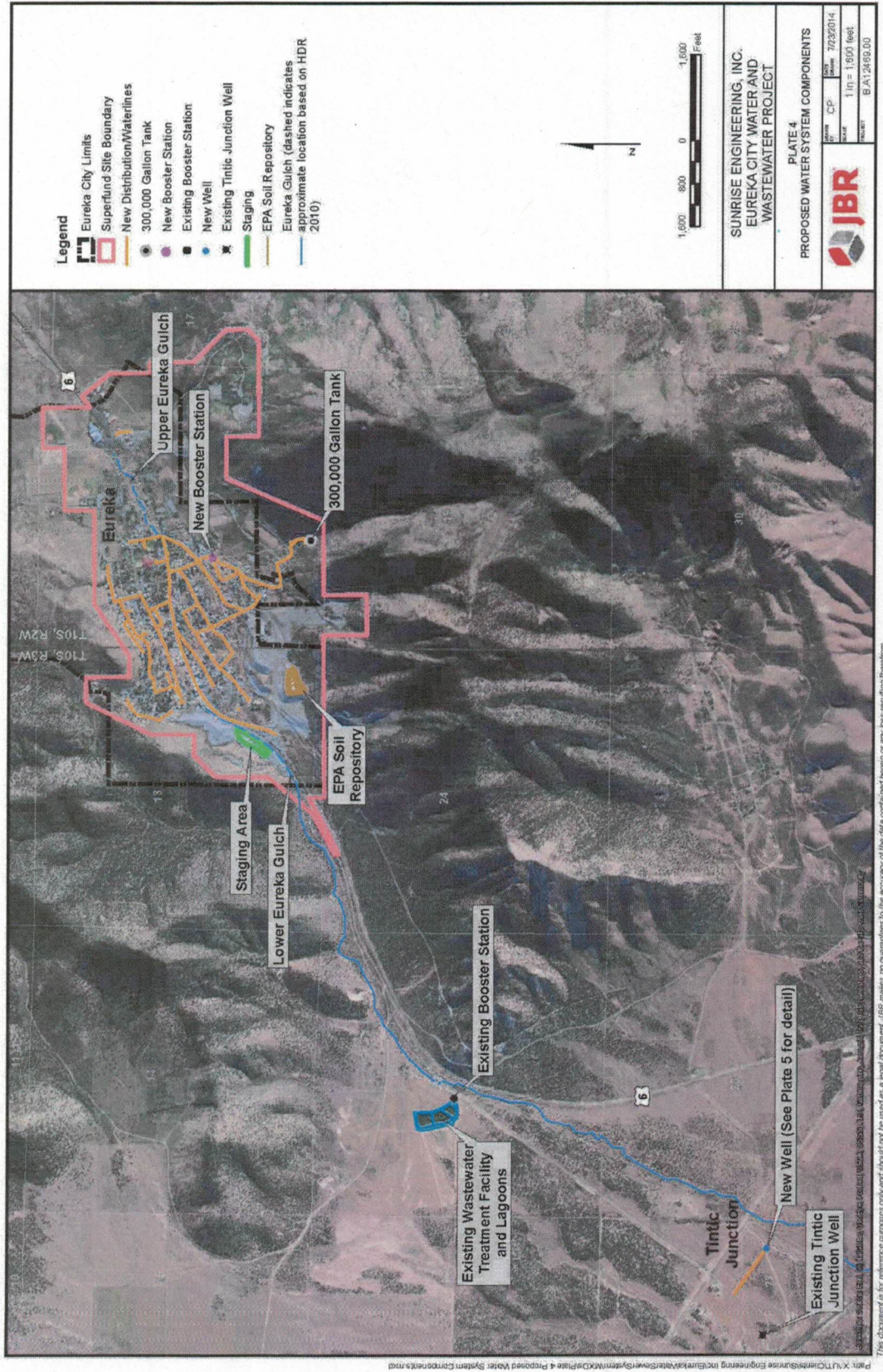
Weigh the benefits and costs required to provide natural gas

Planning Commission, Mayor, City Council, and City Staff

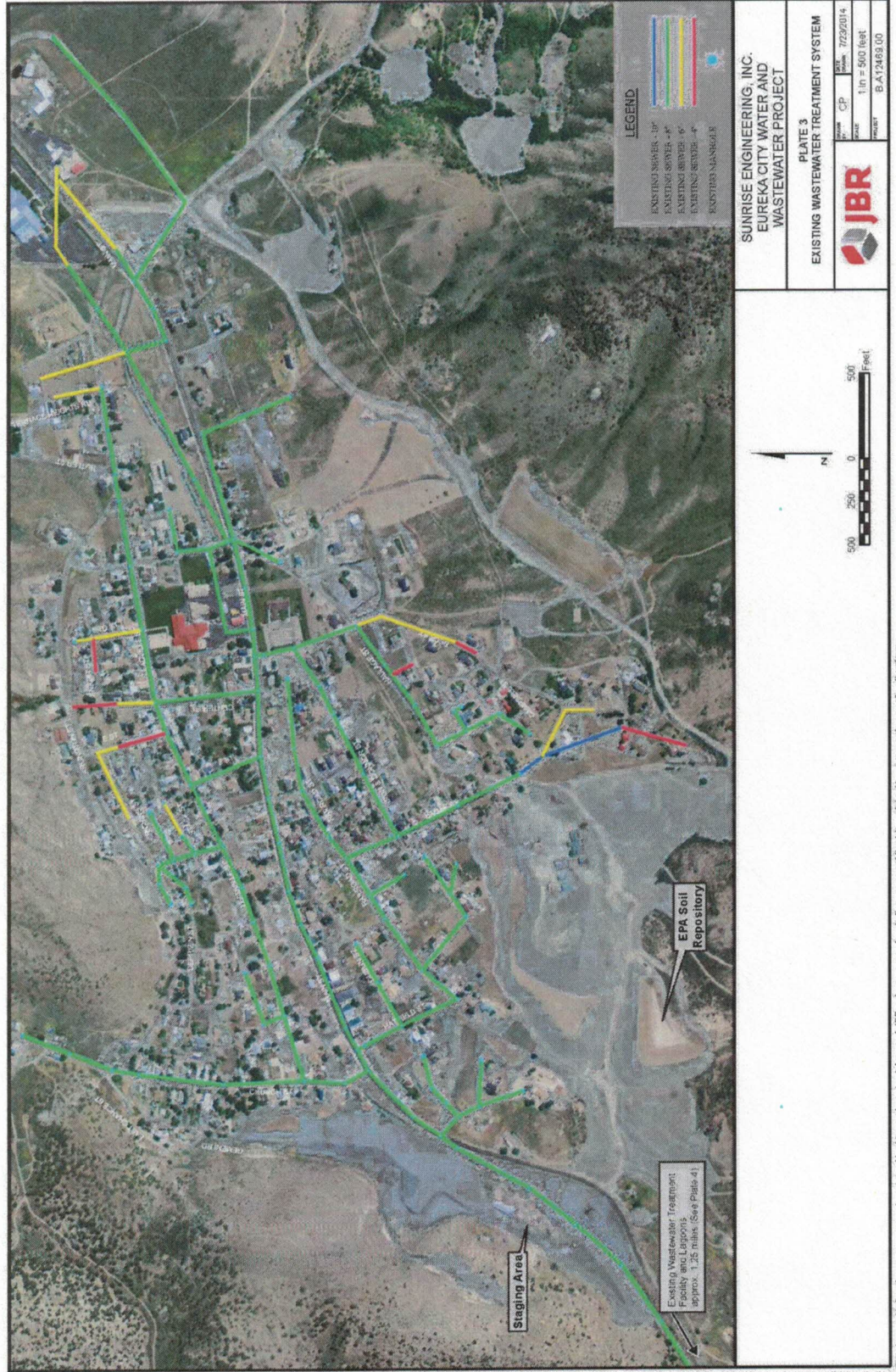
Map 8.1 Eureka City Existing Culinary Water



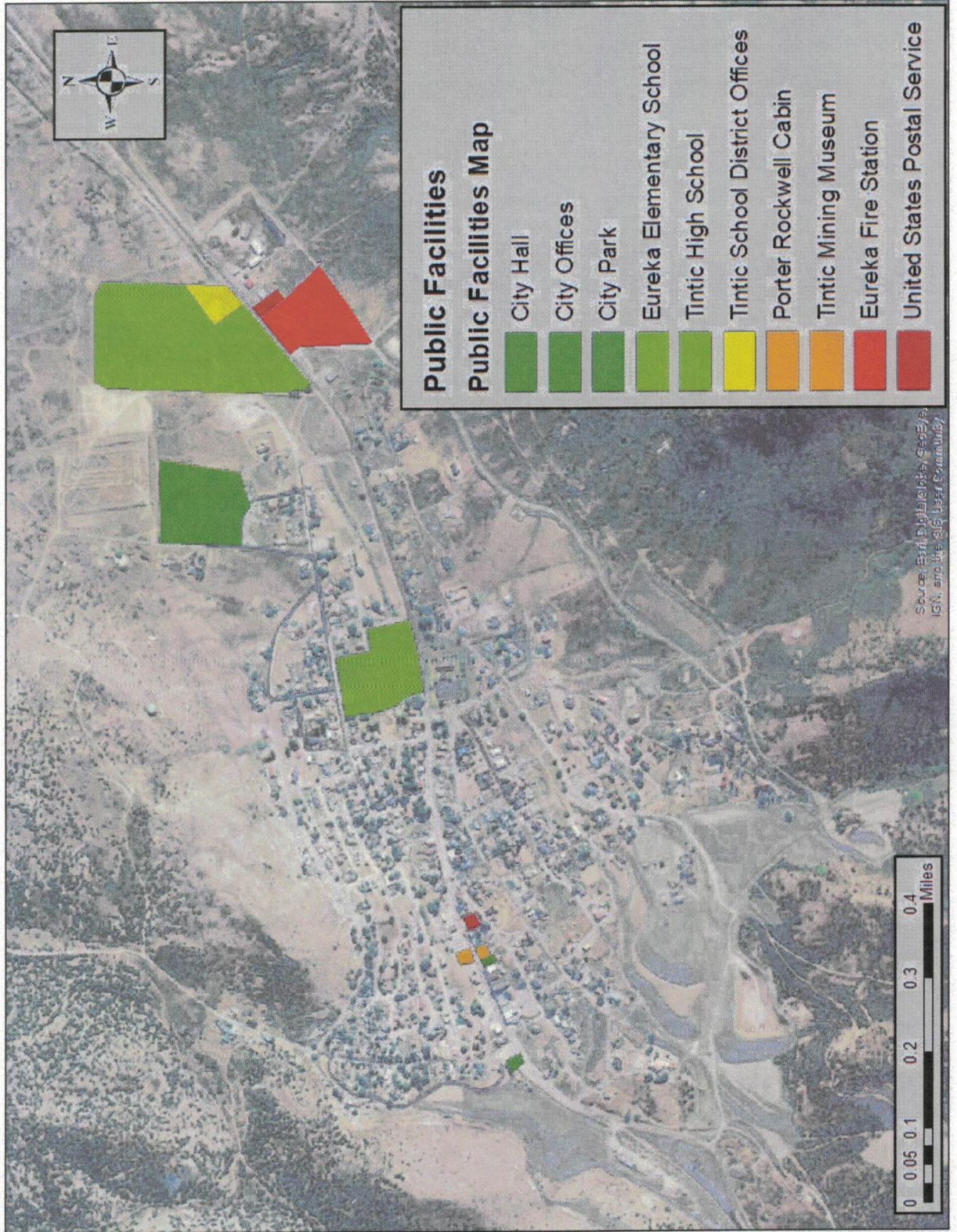
Map 8.2 Eureka City 2013 Water Systems Project



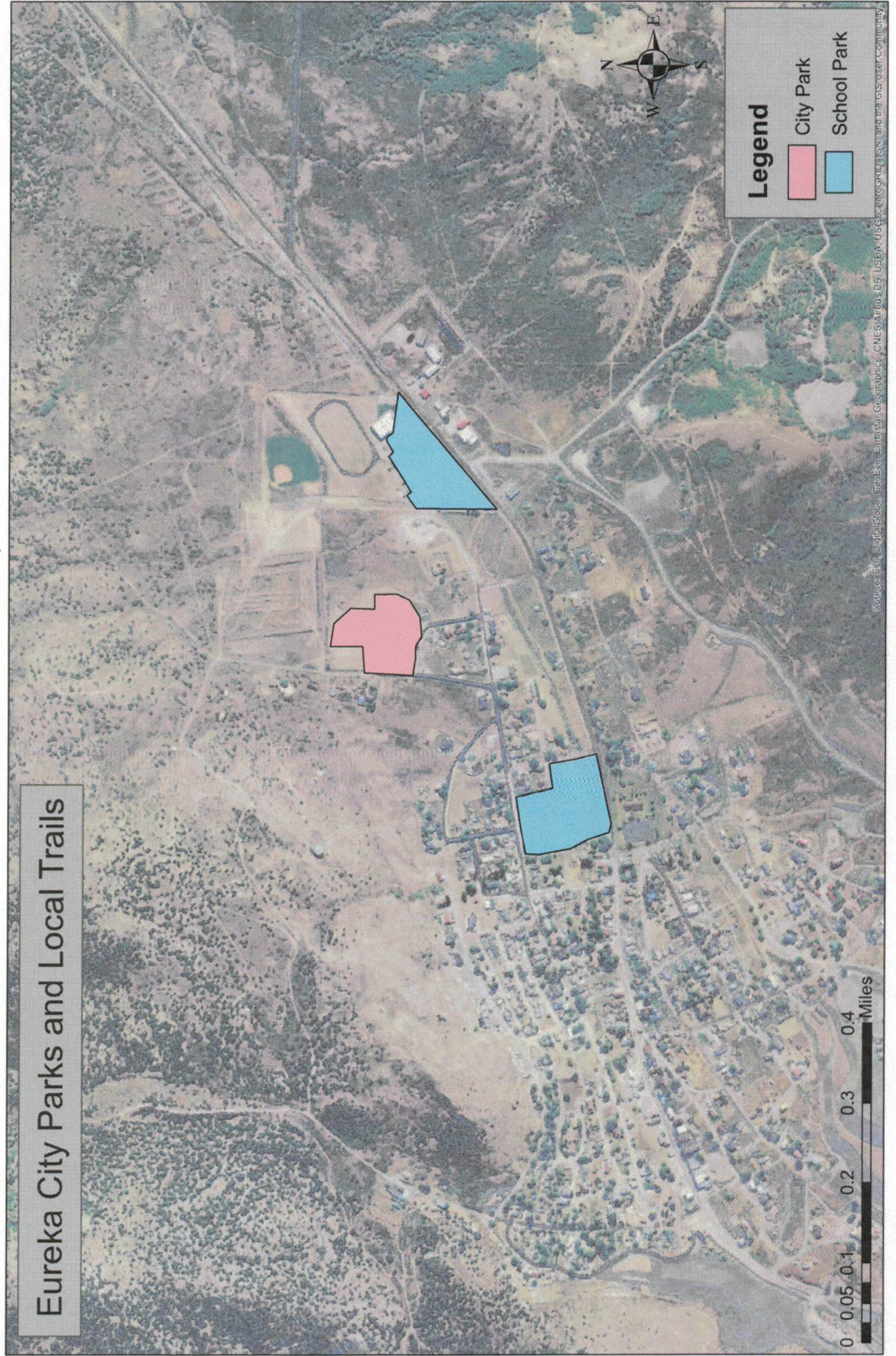
Map 8.3 Eureka City Water Systems Pre-Project



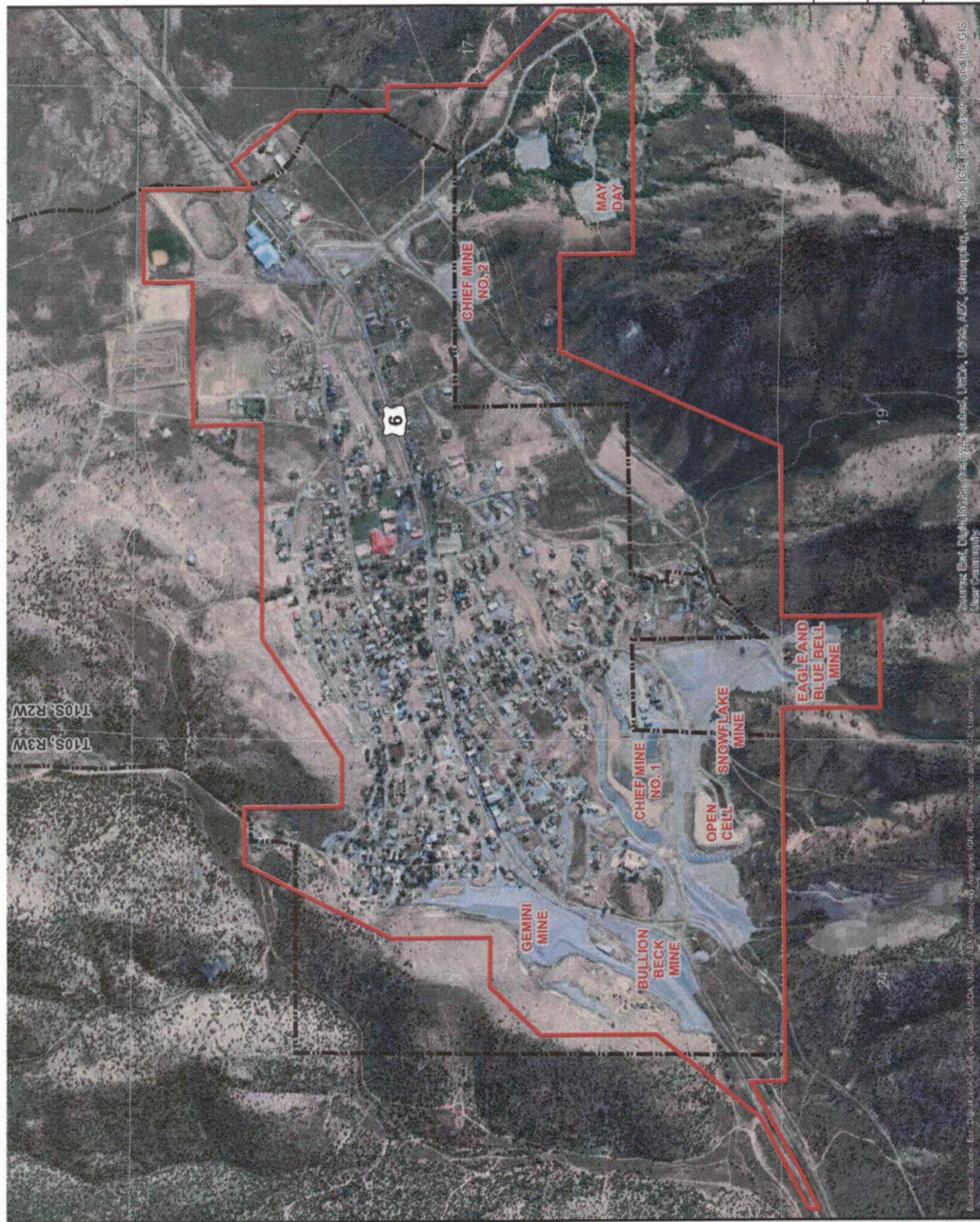
Map 8.4 Eureka City Public Facilities



Map 8.5 Eureka City Parks and Local Trails



Map 8.5 Eureka City Mines



This document is for reference purposes only and should not be used as a legal document. JBR makes no guarantee to the accuracy of the data contained herein, or any loss resulting therefrom.
 Eureka City, California, 95501. Eureka City Water and Wastewater Department, 1000 Eureka Blvd., Eureka, CA 95501. Eureka City Water and Wastewater Department, 1000 Eureka Blvd., Eureka, CA 95501. Eureka City Water and Wastewater Department, 1000 Eureka Blvd., Eureka, CA 95501. Eureka City Water and Wastewater Department, 1000 Eureka Blvd., Eureka, CA 95501.